

# the conversation...

“The PSHE workshops provided by The Conversation have been excellent. They tailor their provision to the needs of each cohort and ensure that students leave each workshop feeling more confident and knowledgeable.”

Head Of PSHE, Bourne Grammar School



## Tackling tricky topics in **Post-16 education**

### **Is this Rape?**

A consent and sexual ethics debate

### **Is this Sexual Harassment?**

A discussion around the nuances of sexual harassment in places of work and education

### **Creating a better sexual culture**

A lecture on understanding consent, sexual harassment and the law, encouraging young people to take ownership of creating a healthier sexual culture

E-mail us for our new schools introductory offer,

[talktous@theconversationstamford.co.uk](mailto:talktous@theconversationstamford.co.uk)

# the conversation...

## Is this Sexual Harassment?



He should never have told the taxi to leave - that's a big assumption.

The kiss was inexcusable. There were not enough signals to justify him making a move.

I feel sorry for him - he went for it and got rejected.

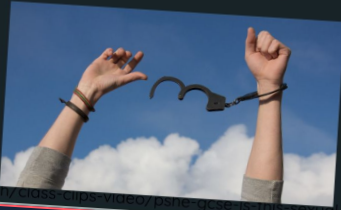
the conversation...

Our sensitively crafted workshops have been used by over 40 schools and colleges this year. Why not invite our professional and highly experienced team in to your school to enhance pupil experience and to ensure a consistent and comprehensive approach to your PSHE teaching?

## Consent:

someone engaging in sexual activity if they **agree by choice** and they have the **freedom** and **capacity** to make that choice.

What might influence someone's freedom and capacity?



<https://www.bbc.co.uk/teach/class-caps-video/pshe-ks3-4-10/sexual-harassment-ps>

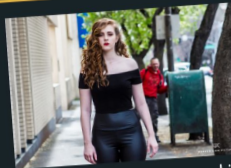
the conversation...

## Sexual Harassment

"Unwanted sexual conduct that violates the other person's dignity"



humiliating  
offensive degrading  
hostile intimidating



the conversation...